

SCREEN SCOTLAND
SGRÌN ALBA

SCOTLAND'S
FILM AND TELEVISION
STUDIO AND
BUILDSPACE

OVER 10K SQ FT

Welcome to Scotland

The Scottish production sector has grown significantly over the last few years, as has the infrastructure required to support this exciting growth. This document illustrates the diverse range of studio and build space facilities available to feature film and HETV productions, located in and around key production hubs in Scotland. Projects as varied as *Good Omens*, *The Rig* and *Anansi Boys* (Amazon), *Outlander* (Starz/Sony), *T2 Trainspotting* (Sony), *The Buccaneers* (Apple+) have all found homes in Scotland. We look forward to helping find a home for your production too – full details on the following pages.

—

For information on our funding programmes and other services provided by Screen Scotland, please visit our website [screen.scot](https://www.screen.scot) or contact us at locations@creativescotland.com

Contents

BBC Scotland Dumbarton Studios	4
BBC Scotland Pacific Quay	6
The Factory Campbeltown	8
FirstStage Studios Edinburgh	10
Govan Shed Glasgow	12
Nightsky Studios Coatbridge	14
Pyramids Business Park Bathgate	16
Studioworks Kelvin Hall Glasgow	18
Wardpark Studios Cumbernauld	20

This document is accurate at the time of publication. However, the providers are constantly developing their services and spaces so **please ensure you contact the operators directly to check your specific requirements.**

BBC Scotland

Dumbarton Studios



Contact	Name of Site	BBC Scotland – Dumbarton
	Owner/Company	BBC Scotland
	Contact Name	BBC Scotland Planning Team
	Full Address	BBC Scotland, Dumbarton Studios, Dumbarton G82 2AP (Exit A82 at Lomond Gate roundabout,)
	Telephone	
	Email	street.productionfacilities@bbc.co.uk
	Website	www.bbcstreet.co.uk
	Previous Productions	<i>Shetland, River City, Two Doors Down and Vigil</i>
Features	Stages	
	Production Spaces	The facility currently offers studio space of 18,000 sq ft, (1,672 sq m) build/construction space and a full size backlot.
	Power	3-phase
	Soundproofing	The studios are acoustically treated to reduce noise pollution and have a 3-phase power supply.
	Blackout / Windows	Yes
	Office Space	Yes
	Vehicle Access Details	Dumbarton Studios is located within 30 mins of central Glasgow, 20 mins from Glasgow Airport and 10 mins from Loch Lomond and the Gateway to the Highlands.
	Parking	Ample
	Backlot / Hard Standing	Full size backlot
	Telecoms	
	Additional Features	Canteen, offices, security, workshops. The BBC also has studio space at Pacific Quay (Glasgow) which is available at times.
Travel	Traffic Noise	
	Closest major road	A82
	Closest major city	Glasgow
	Closest airport	Glasgow
	Closest Accommodation	Dumbarton or Glasgow





BBC Scotland Pacific Quay



Contact	Name of Site	BBC Scotland – Pacific Quay
	Owner/Company	BBC Scotland
	Contact Name	BBC Scotland Planning Team
	Full Address	40 Pacific Quay, Glasgow G51 1DA
	Telephone	
	Email	street.productionfacilities@bbc.co.uk
	Website	www.bbcstreet.co.uk
	Previous Productions	<i>Mrs Brown's Boys, Swashbuckle, The Hitlist, Richard Osman's House of Games Unbeatable and Catchpoint</i>
Features	Stages	Studio A: 8,417 sq ft (782 sq m), height 29.5 ft (9 m) Studio B: 2594 sq ft (241 sq m), height 19.6 ft (6 m)
	Production Space	
	Power	
	Soundproofing	Yes
	Blackout / Windows	Yes
	Office Space	
	Vehicle Access Details	24-hour drive-in access
	Parking	Plenty
	Backlot / Hard Standing	
	Telecoms	
	Additional Features	Production office, green rooms, dressing rooms, makeup, wardrobe, laundry, audience handling area and restaurant.
Travel	Traffic Noise	
	Closest Major Road	Govan Road and M8
	Closest Major City	Glasgow
	Closest Airport	Glasgow
	Closest Accommodation	Glasgow





The Factory Campbeltown



Contact

Name of Site	The Factory, MACC Business Park, Machrihanish
Owner/Company	Highlands & Islands Enterprises (HIE)
Contact Name	Mark Gillies
Full Address	The Factory, Machrihanish, Campbeltown, Argyll & Bute PA28 6NU
Telephone	+44 (0)7787 291149
Email	Mark.gillies@g-s.co.uk
Website	www.g-s.co.uk

Previous Productions

Features

Stages	Building	Sq Ft	Sq M	Eaves Height
	Building A	62,786 sq ft	5,833 sq m	8.75 m
	Building B	56,113 sq ft	5,213 sq m	11.76 m
	Building C	15,253 sq ft	1,417 sq m	N/A
	Building D	20,214 sq ft	1,877 sq m	11.35 m
	Building E	20,559 sq ft	1,909 sq m	10.00 m
	Building F	38,794 sq ft	3,604 sq m	14.50 m
Production Space	Total Space	213,719 sq ft	19,853 sq m	
Power	Up to 4MVA			
Soundproofing	Not as standard			
Blackout / Windows	Could be retrofitted			
Office Space	15,253 sq ft (1,417 sq m)			
Vehicle Access Details	Drive in.			
Parking	Substantial.			
Backlot / Hard Standing	Total site extends to c.66 acres			
Telecoms	TBC			
Additional Features	Substantial craneage on site			
Traffic Noise	None			

Travel

Closest Major Road	1.8 miles to A83
Closest Major City	Campbeltown (136 miles)
Closest Airport	Campbeltown (1.6 miles)
Closest Accommodation	Crew accommodation available on site at MACC base (basic student style). 12 mins. 7.6 miles to best hotel in the area.

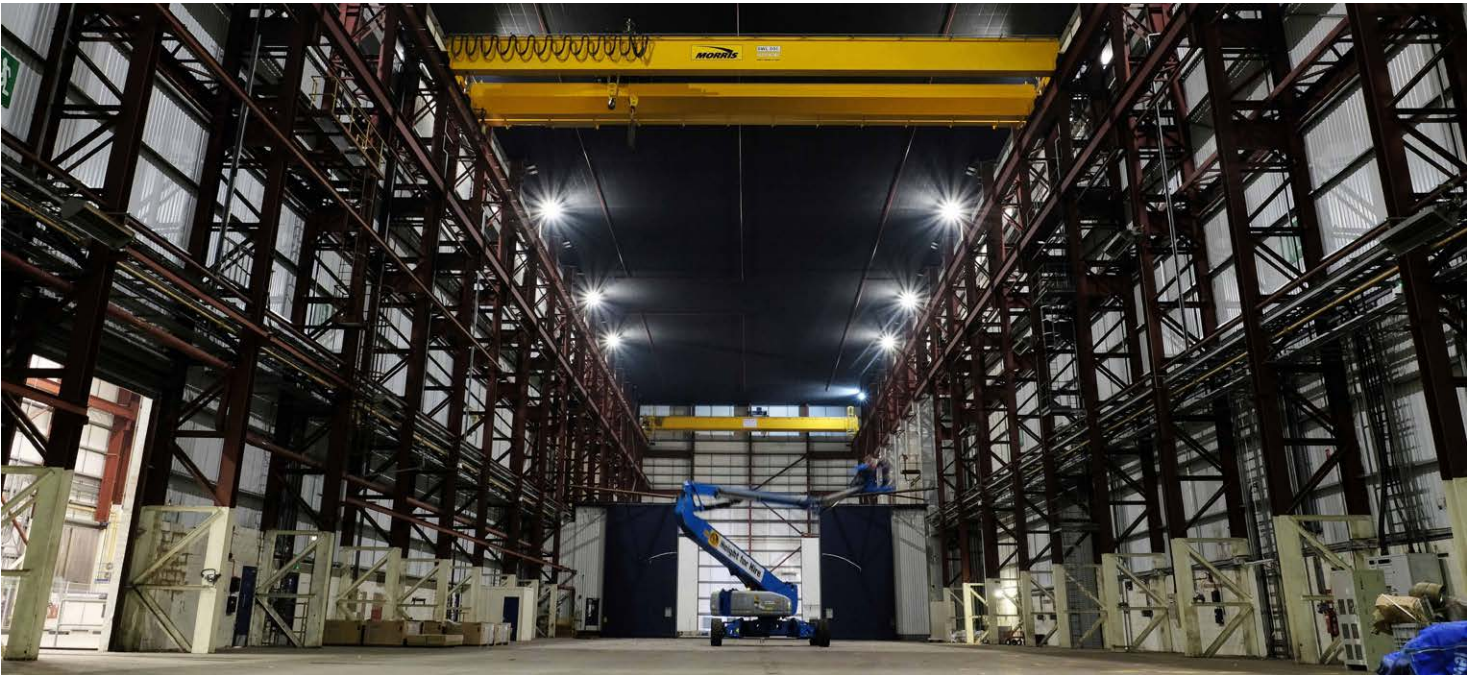




FirstStage Studios Edinburgh



Contact	Name of Site	FirstStage Studios
	Owner/Company	FirstStage Studios Ltd
	Contact Name	Bob Last, Sophie Williams
	Full Address	31 Bath Road, Leith, Edinburgh EH6 7AH
	Telephone	
	Email	sales@firststagestudios.com
	Website	www.firststagestudios.com
	Previous Productions	<i>The Rig</i> (Series 1 & 2), <i>Anansi Boys</i> , <i>The Outrun</i> , and various commercials
Features	Stages	<p>Stage A: 14,759 sq ft (1,371 sq m) with 20-ton full-reach gantry crane. Height 85 ft (26 m)</p> <p>Stage B: 24,000 sq ft (2,230 sq m) with 60-ton full-reach gantry crane. Mother truss. Height 85 ft (26 m)</p> <p>Stage C: 24,294 sq ft (2,257 sq m) includes build down space/pit with removable covers. The pit can be filled for water work. Height 63 ft (19 m)</p> <p>Stage D: 9,882 sq ft (918 sq m). Height 48 ft (14.6 m)</p>
	Production Space	115,000 sq ft (10,684 sq m) on 8.9 acre site
	Power	Over 3000 amps of 3-phase 240-volt power. 3-phase, 16-amp, 13-amp and 110-volt power available throughout including external hook ups.
	Soundproofing	Yes
	Blackout / Windows	Yes. All stages blacked out.
	Office Space	2 x circa 9,000 sq ft (836 sq m) flexible office spaces.
	Vehicle Access Details	Easy access for large trucks and other vehicles
	Parking	Over 200 vehicles
	Backlot / Hard Standing	Yes
	Telecoms	Ultra-high bandwidth connectivity available throughout the facility through a fibre backbone.
	Additional Features	4 workshops totalling circa 43,000 sq ft (3994 sq m) including mill (workshop 3), various workrooms, laundry and DIT room. On-site rigging and IT services.
	Traffic Noise	N/A
	Travel	Closest Major Road
Closest Major City		Edinburgh, Leith
Closest Airport		Edinburgh International
Closest Accommodation		Convenient location close to the city centre with a wide range of nearby amenities including extensive accommodation of all standards, bars, cafes and Michelin starred restaurants in walking distance.

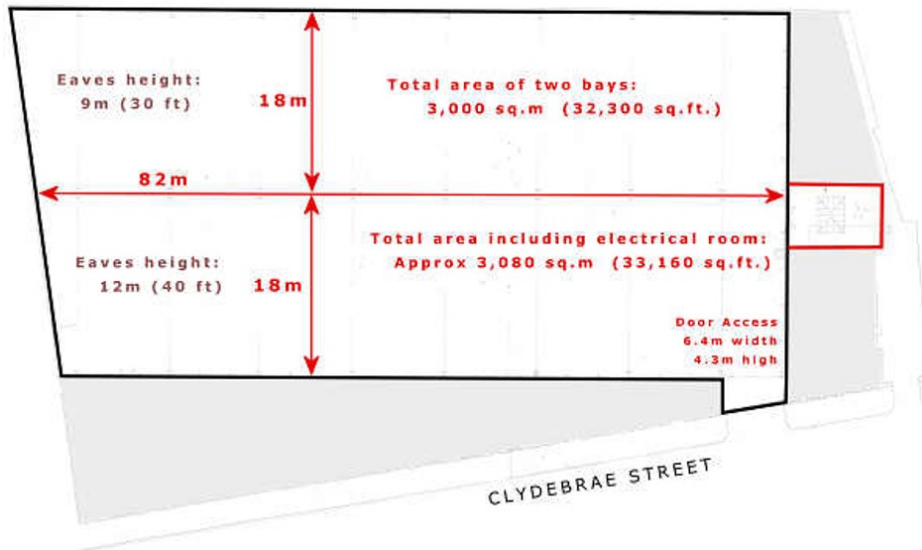


Govan Shed

Glasgow



Contact	Name of Site	Govan Shed
	Owner/Company	Embee Properties Ltd
	Contact Name	Neil Macmillan
	Full Address	23 Clydebrae Street, Govan, Glasgow, G51 2AJ
	Telephone	
	Email	office@govan-shed.co.uk
	Website	http://www.govan-shed.co.uk
	Previous Productions	<i>World War Z, Valhalla Rising, 1917, Tetris, Indiana Jones and the Dial of Destiny, Bell Bottom, Annika (Series 1 & 2), Men of Rock, Horizon, Batgirl and Nightsleeper</i>
Features	Stages	32,000 sq ft (2,973 sq m) single warehouse space. Two bays with 29.5 ft (9 m) and 39.4 ft (12 m) eaves height respectively.
	Production Spaces	Green room: 100 sq ft (9.3 sq m) Production Room 1: 100 sq ft (9.3 sq m) Production Room 2: 250 sq ft (23 sq m)
	Power	3-phase, 500A/phase, with around 300A/phase available for use to the main space. 63A 3P+N socket and various 32A 1P+N sockets around space.
	Soundproofing	Minimal
	Blackout / Windows	Partial blackout – all windows blacked out but there is some light spill around the blackout.
	Office Space	Production rooms can be used as office space.
	Vehicle Access Details	Large roller shutter door offers access for almost any HGV, double decker bus etc.
	Parking	Street parking outside for 15 cars on Clydebrae Street. Lane closure option on Govan Road for approx 15 cars.
	Backlot / Hard Standing	None
	Telecoms	None
	Additional Features	Access route for generator cabling to come in without doors being left open.
	Traffic Noise	Govan Road has traffic noise – recommended to close lane and use production vehicles to minimise.
Travel	Closest Major Road	M8 J24
	Closest Major City	Glasgow
	Closest Airport	Glasgow Airport
	Closest Accommodation	Various hotels around BBC Scotland facility all 5 mins walk.



Nightsky Studios Coatbridge



Contact	Name of Site	Nightsky Studios
	Owner/Company	Nightsky Productions Ltd
	Contact Name	Ben Bentley
	Full Address	Viewfield Park, Viewfield Road, Coatbridge, ML5 5QS
	Telephone	
	Email	info@wearenightsky.com
	Website	wearenightsky.com
	Previous Productions	<i>Two Doors Down, Black Mirror, Deadshot</i>
Features	Stages	Stage 1: 11,000 sq ft (1022 sq m) Stage 2: 5,500 sq ft and workshop (511 sq m) Stage 3: 6500 sq ft (604 sq m)
	Production Space	Stage 1: 126 x 92 ft (38.5 x 28 m) 27 ft (8.3 m) rigging height, 24 ft (7.3 m) clear trim Stage 2: 80 x 69 ft (24.5 x 21 m) Eaves 19.6 ft (6 m), apex 24.6 ft (7.5 m) Workshop/Stage 3: 92 x 52 ft (28 x 16 m) Eaves 16.4 ft (5m) apex 19.6 ft (6 m)
	Power	Stage 1: 2 x 200-amp power lock (or 1 x 400-amp). 2 x 63 / 3-phase Stage 2: 1 x 200-amp power lock. 1 x 125-amp 3-phase. 1 x 63-amp 3-phase Workshop/Stage 3: 1 x 63 amp 3-phase
	Soundproofing	Stage 1 - 400 mm insulation - 200 mm high density foam, 200 mm Rockwool, 250 gsm Drape. Stage 2 - 150 mm of closed cell insulation on roof and walls.
	Blackout / Windows	Both units blackout
	Office Space	6 x green room 1 x Production office 1 x Board room 4 x Multi function rooms
	Vehicle Access Details	Unit 1 - 4 x 4 m roller shutter Unit 2 - 3 of 2.2 x 2.2 m roller shutter with loading docks
	Parking	200 spaces plus unit base
	Backlot / Hard Standing	Approx 80,000 sq ft of parking space.
	Telecoms	1 GB up and down fibre. No phone lines currently connected.
	Additional Features	Full turnkey virtual production set with ability to have up to 30 x 5 m screen, can be configured in any dimension.
	Traffic Noise	No traffic noise
	Travel	Closest Major Road
Closest Major City		Glasgow
Closest Airport		Glasgow - 18.6 miles Edinburgh - 30.6 miles
Closest Accommodation		Glasgow: 3 miles - Double Tree by Hilton. 3.7 miles - Dakota Eurocentral

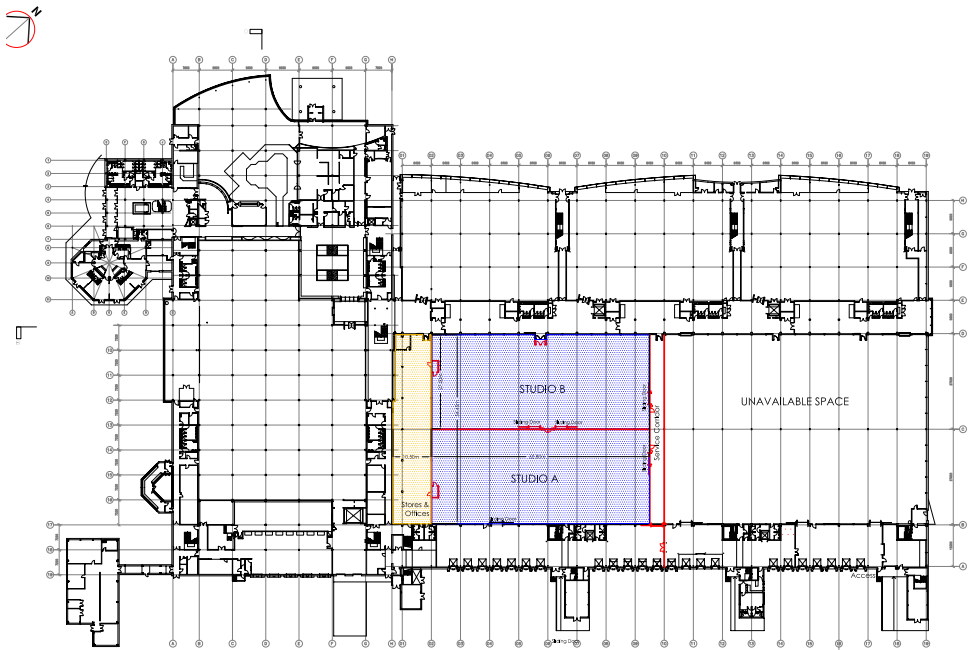


Pyramids Business Park Bathgate



Contact	Name of Site	Pyramids Studios (Business Park)	
	Owner/Company	The MBSGroup	
	Contact Name	Joanna Dewar Gibb/Jelena Blazic	
	Full Address	Pyramid Studios (Business Park), Easter Inch, Bathgate, West Lothian, EH48 2WX	
	Telephone	O: +44 (0) 1753987888 / M: +44 (0) 7884 539367	
	Email	jgibb@the-mbsgroup.com / jblazic@the-mbsgroup.com	
	Website	pyramidsstudios.com	
	Previous Productions	<i>Good Omens II</i> (Amazon/BBC), <i>The Buccaneers</i> (Apple TV+), <i>Shetland</i> (BBC), <i>Eurovision</i> (Netflix), <i>Outlaw King</i> (Netflix), <i>T2 Trainspotting</i> (TriStar), Various PSB's	
Features	Stages	Stage 1: 44,787 sq ft (4,161 sq m) Height 38 ft (11.6 m) (31 ft to truss) including supporting units and backlot.	
		Stage 2: 60,481 sq ft (5,619 sq m) Height 38 ft (11.6 m) (31 ft to truss) including supporting units and backlot.	
	Production Spaces	150,000 sq ft (13,935 sq m) of flexible production space, workshops and offices.	
	Power	3-phase	
	Soundproofing	Partial	
	Blackout / Windows	Blackout – Yes	
	Office Space	Yes	
	Vehicle Access Details	Elephant Doors	
	Parking	1,300 spaces	
	Backlot / Hard Standing	Extensive backlot and hardstanding	
	Telecoms	Fibre connection	
	Additional Features	24-hour security, on-site café/catering, gym and nursery	
	Traffic Noise	Minimal	
Travel	Closest Major Road	M8 Junction 3A (1 mile away)	
	Closest Major City	Edinburgh (EH1) – 20 miles/31 mins Glasgow (G1) – 29 miles/33 mins	
	Closest Airport	Edinburgh International Airport (EDI) – 13 miles/17 mins Glasgow International Airport (GLA) – 38 miles/40 mins	
	Closest Accommodation	Hotels adjacent (2 miles/5 mins) and unlimited beds within 20 mins	



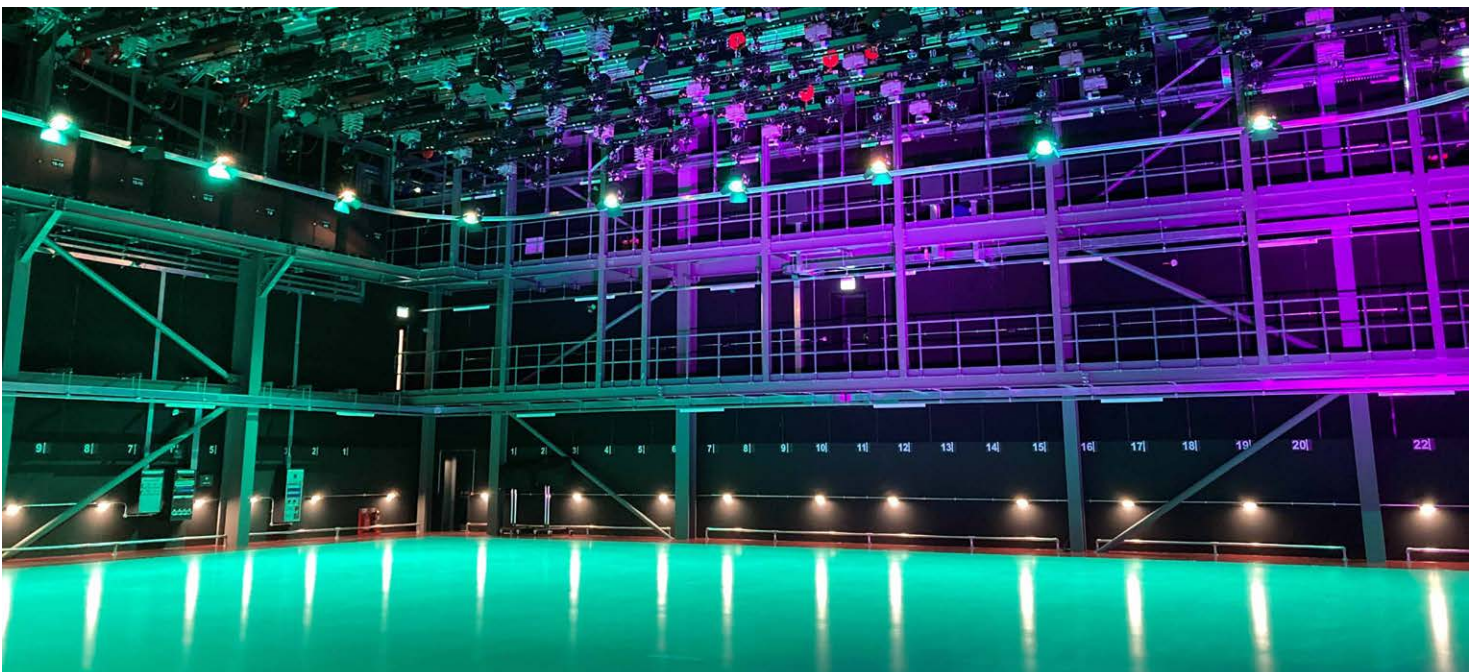


Studioworks Kelvin Hall Glasgow



Contact	Name of Site	BBC Studioworks Kelvin Hall Studio
	Owner/Company	BBC Studioworks
	Contact Name	Stuart Guinea
	Full Address	1445 Argyle Street Glasgow, G3 8AW
	Telephone	
	Email	hello@bbcstudioworks.com
	Website	www.bbcstudioworks.com
Features	Previous Productions	<i>Bridge Of Lies, Frankie Boyle's New World Order</i>
	Stages	1 x 10,500 sq ft (975 sq m)
	Production Space	Floor space 115 x 92 ft (35 x 28 m), Height 33 ft (10.2 m)
	Power	630A TPN
	Soundproofing	Fully sound proofed
	Blackout / Windows	Full blackout
	Office Space	4 x Production offices
	Vehicle Access Details	Direct Truck access via Old Dumbarton Road
	Parking	Bunhouse Road car park
	Backlot / Hard Standing	None
	Telecoms	High speed fibre
Additional Features	12 Ensuite dressing rooms, makeup and wardrobe facilities, group room, green room, catering kitchen, production, sound and lighting galleries. Motorised scenic and lighting hoist system. Crew booking service when using the studio. Sustainability at the core of the design.	
Travel	Traffic Noise	None
	Closest Major Road	Argyle Street
	Closest Major City	Glasgow
	Closest Airport	Glasgow Airport
	Closest Accommodation	Glasgow Hotels





Wardpark Studios Cumbernauld



Contact	Name of Site	Wardpark Film and Television Studios
	Owner/Company	The MBS Group
	Contact Name	Joanna Dewar Gibb/Jelena Blazic
	Full Address	Wardpark Film and Television Studios, Wyndford Road, Cumbernauld, Glasgow, G68 0BA
	Telephone	O: +44 (0)1753987888 M: +44 (0) 7884 539367
	Email	jgibb@the-mbsgroup.com / jblazic@the-mbsgroup.com
	Website	www.wardparkstudios.co.uk
	Previous Productions	<i>Outlander</i> – Series 1-8 (Sony Pictures Television/Starz) <i>Blood Of My Blood</i> – Series 1 (Sony Pictures Television/Starz)
Features	Stages	A Stage – 13,400 sq ft (1,244.9 sq m) Height 40 ft (12 m) B Stage – 11,500 sq ft (1,068.4 sq m) Height 21-30 ft (6.4 – 9.1 m) C Stage – 9,700 sq ft (901.2 sq m) Height 24 ft (7.3 m) D Stage – 11,200 sq ft (1,040.5 sq m) Height 24 ft (7.3 m) E Stage – 5,500 sq ft (511 sq m) Height 22 ft (6.7 m) F Stage – 14,000 sq ft (1,300.6 sq m) Height 25 ft (7.6 m) G Stage – 5,500 sq ft (511 sq m) Height 18 ft (5.5 m)
	Production Spaces	150,000 sq ft (13,935 sq m) of flexible production space, workshops and offices – full facilities
	Power	3-phase power supply
	Soundproofing	Yes
	Blackout / Windows	Yes
	Office Space	Yes
	Vehicle Access Details	Roller shutter access throughout
	Parking	300 spaces and offsite parking
	Backlot / Hard Standing	12-acre site with hard standings
	Telecoms	Fibre connection
	Additional Features	24-hour security, full scope of facilities from dye room, paint, plaster shops, construction, costume, post-production
	Traffic Noise	None
Travel	Closest Major Road	M80 Junction 6 (1 mile)
	Closest Major City	Glasgow (G1) – 15 miles/21 mins Edinburgh (EH1) – 38 miles/47 mins
	Closest Airport	Glasgow (GLA) – 24 miles/29 mins Edinburgh (EDI) – 29 miles/32 mins Cumbernauld Airport – 1 mile/2 mins
	Closest Accommodation	Hotels adjacent (2 miles/5 mins) and unlimited beds within 20 mins.

